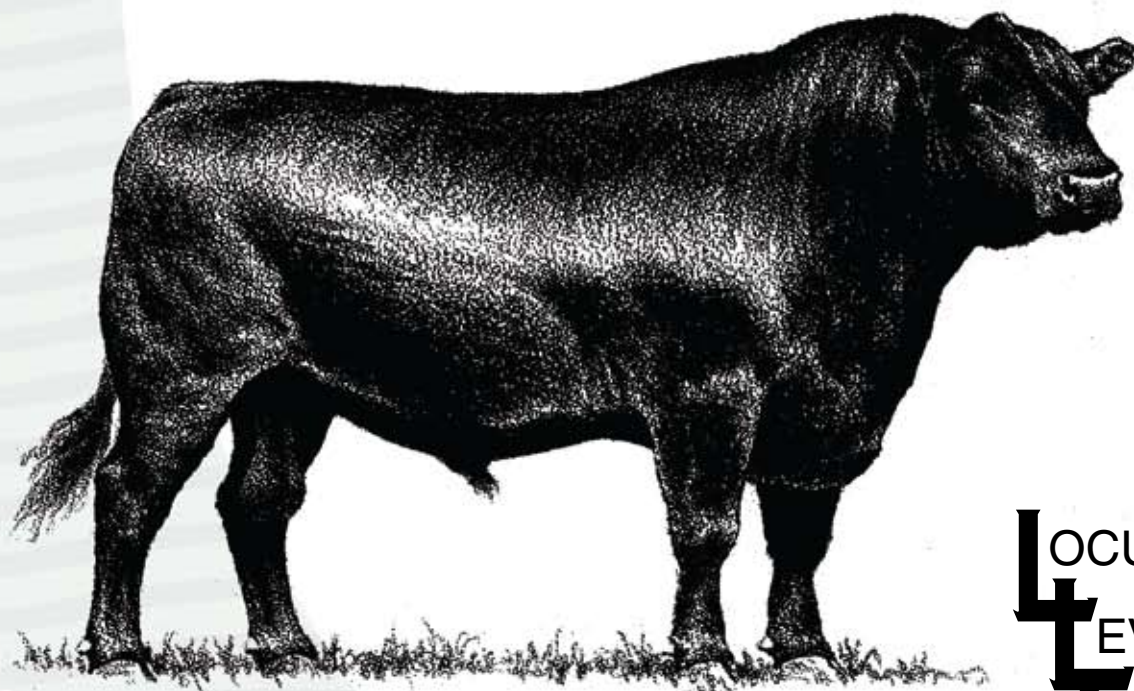


The **PROGRAM**

Total Evaluation Bull Sale



LOCUST
LEVEL
FARMS

12:30 p.m. • Saturday

FEBRUARY 23, 2008

**G & E Performance Test Center
Gretna, Virginia**

**daltonson
the
sycamore**

"Bulls from Programs with a Program"

“Bulls from Programs with a Program”
The PROGRAM

Total Evaluation Bull Sale

12:30 p.m. • Saturday

FEBRUARY 23, 2008

G & E Performance Test Center • Gretna, Virginia

46 Totally Evaluated Angus Bulls Sell – All Ready for Service

SALE DAY PHONE – 434-656-3356 or 434-656-3194

Auctioneer:

E.B. Harris 252-257-2140

Representatives

Dr. John Hall 540-231-9163
Dr. A.L. “Ike” Eller 540-951-2109
Dr. Scot Greiner 540-231-9163
Jamie Stowe, Pittsylvania Co. Ext. Agent 434-432-7770
Cynthia Gregg, Brunswick Co. Ext. Agent 804-848-2151
John Hamrick, Franklin Co. Ext. Agent 540-483-5161
Taylor Clarke, Mecklenburg Co. Ext. Agent 434-738-6191
Dave Mullins, American Angus Regional Mgr. 301-271-2767

Special Representatives

Cotton & Associates - Mike Gothard 540-894-1055
Jerry Crenshaw 703-244-4767
Norm Vincel 540-483-5123
Scott Weller 540-294-0555

Test Station Manager

George Winn, G&E Farms, Gretna, VA 434-489-4458
Call for loading information if after sale day.

Sale Headquarters

Comfort Suites, P.O. Box 714, Altavista, VA 24577
800-322-5050 or 434-369-4000

Sale Location: G & E Performance Test Center, Gretna, VA, south of Rt. 40 on Business Rt. 29

Airport: Commercial flights available at Lynchburg Municipal Airport.

Food: Food will be available sale day.

Herd Health: A representative of Virginia Animal Health Division will be on hand to issue interstate health papers.

Ear Tags: Ear tags on the bulls will correspond with lot numbers in the catalog.

Terms and Conditions: Cattle sell under the standard Terms and Conditions as recommended by the American Angus Association as revised by the Virginia Angus Association. A copy will be available sale day at the clerk's table.

Trucking: Truckers believed to be reliable will be on hand to assist you in making arrangements for shipping the cattle you purchase.

Inspection of Bulls: Bulls will be available for inspection at G & E Performance Test Center. Contact George Winn, 434-489-4458.

The Programs

Locust Level, Mike McDowell 434-349-3779 or 434-575-4850 (cell)
Daltons on the Sycamore, Dennis Eastin, manager 434-656-3459 or 434-941-8757 (cell)

Breeding Soundness

All bulls have passed a physical exam including rectal palpation and scrotal measurements performed by Dr. Pete Fulper, DVM. Bulls are fully warranted to service the buyers' cows as per established conditions of Perform Angus and Program Bull Sales as outlined in most recent catalogs. See clerk for details.

EPD Data

The EPD's represented in this catalog were current at the time requested for printing the sale catalog. Twice annually, EPDs are recalculated by the American Angus Association, which means the figures represented in this catalog may change for these animals in the future.

Discounts

If you purchased a bull at the 2007 Program Bull Sale, you are eligible for a 5% discount on purchases this year at the sale. A purchase this year entitles the buyer to a 5% discount next year.

In the event snow and inclement weather should cause postponement of the sale, the sale will be held on Friday, February 29, 2008 at 12:30 p.m.

The PROGRAM

Total Evaluation Bull Sale

1 Daltons Objective 755

Bull • 15919700 • TATTOO 755 • CALVED 3/2/2007

#S S Traveler 6807 T510
 S S Objective T510 OT26
 13776378 S S Miss Rita R011 7R8

#D H D Traveler 6807
 #S S Miss Hi Spade A114
 S S Rito Rito R76 R011
 S S Miss Ultress U56

G A R Retail Product
 +Baldridge Rita R138
 +15119744 G A R Prime Time 2409

#G A R Precision 1680
 +G A R Ext 4927
 #Gardens Prime Time
 +G A R Ext 327

Test Group III

RIBEYE **13.5**

BACKFAT **.53**

ADJ. IM. FAT **6.75**

BW	BWR	WW	WWR	TEST ADG	ADG R	ADJ YW	YWR	SCROTAL	
60	87	775	111	4.77	116	1473	105	36.5	
CED	BW	WW	YW	MILK	YH	IM FAT	RIBEYE	BACKFAT	SB
	I-.1	I+.59	I+108	I+.27	I+.2	I+.55	I+.48	I+.012	+55.44
	.36	.34	.33	.21	.23	.05	.05	.05	

Dam's Prod. Record: BWR 1-87 WWR 1-111 YWR 1-122
 IMF% 1-100 REA 1-100 RBF RPF

- \$W 29.36
- Frame Score 6
- 3 Muscle 14 Type
- 755 is a grandson of GAR Greatest Donor 2409
- Retaining 1/2 Semen Interest

2 Daltons Predestined 77

Bull • 15919688 • TATTOO 77 • CALVED 1/29/2007

#B/R New Design 036
 G A R Predestined
 13395344 #+G A R Ext 4206

#V D A R New Trend 315
 B/R Blackcap Empress 76
 #N Bar Emulation EXT
 +G A R 6807 Traveler 1432

#G A R Precision 1680
 +G K A F Elluna 291
 +14120797 +V D A R Elluna 6204

#Tehama Bando 155
 #9J9 G A R 856
 #+V D A R Lucys Boy
 #+V D A R Elluna 4167

Test Group III

RIBEYE **15.1**

BACKFAT **.57**

ADJ. IM. FAT **7.24**

BW	BWR	WW	WWR	TEST ADG	ADG R	ADJ YW	YWR	SCROTAL	
80	104	687	98	5.16	125	1452	107	37.61	
CED	BW	WW	YW	MILK	YH	IM FAT	RIBEYE	BACKFAT	SB
	I+.6	I+.3.1	I+.43	I+.90	I+.24	I+.1	I+.60	I+.54	I+.017
	.05	.38	.36	.35	.22	.26	.32	.32	.32

Dam's Prod. Record: BWR 4-106 WWR 4-98 YWR 4-100
 IMF% 4-105 REA 4-97 RBF RPF

- \$W 21.52
- Frame Score 6.5
- 3 Muscle 14 Type
- IMF Ratio 114
- REA Ratio 103
- Retaining 1/2 Semen Interest

3 Daltons New Design 73

Bull • 15919686 • TATTOO 73 • CALVED 1/21/2007

#B/R New Design 036
 #Bon View New Design 208
 #13044574 #Bon View Erica 443

#V D A R New Trend 315
 B/R Blackcap Empress 76
 #N Bar Emulation EXT
 #Bon View Erica 1380

#C A Future Direction 5321
 VT Future Direction B59
 14817436 +VT 1407 New Design Z36

#G A R Precision 1680
 C A Miss Power Fix 308
 #Bon View New Design 1407
 +G A R Plowman G240

Test Group III

RIBEYE **17.5**

BACKFAT **.63**

ADJ. IM. FAT **5.45**

BW	BWR	WW	WWR	TEST ADG	ADG R	ADJ YW	YWR	SCROTAL	
60	85	709	101	4.11	100	1367	101	37.84	
CED	BW	WW	YW	MILK	YH	IM FAT	RIBEYE	BACKFAT	SB
	I+.9	I-.2	I+.50	I+.91	I+.39	I+.1	I+.37	I+.86	I+.023
	.05	.36	.34	.33	.31	.24	.32	.32	.32

Dam's Prod. Record: BWR 1-85 WWR 1-101 YWR 1-114
 IMF% 1-86 REA 1-120 RBF RPF

- \$W 33.46
- Frame Score 6
- 4 Muscle 15 Type
- REA Ratio 120
- 73 traces to the Number 1 Cow of Breed 2536
- Retaining 1/2 Semen Interest

4 Daltons Future Direction 718

Bull • 15919691 • TATTOO 718 • CALVED 2/5/2007

#G A R Precision 1680
 #C A Future Direction 5321
 #12493607 C A Miss Power Fix 308

#Tehama Bando 155
 #9J9 G A R 856
 #+S A F Power Fix
 C A Lady Eight 1015

#Bon View New Design 1407
 +VT 1407 New Design Z36
 +14399854 +G A R Plowman G240

#B/R New Design 036
 Bon View Pride 664
 #Plowman 1627 of Millbrae SAR
 G A R Precision 2536

Test Group III

RIBEYE **16.7**

BACKFAT **.51**

ADJ. IM. FAT **9.99**

BW	BWR	WW	WWR	TEST ADG	ADG R	ADJ YW	YWR	SCROTAL	
75	ET	603	ET	3.96	96	1256	100	31.8	
CED	BW	WW	YW	MILK	YH	IM FAT	RIBEYE	BACKFAT	SB
	I+.8	I+.1.8	I+.47	I+.87	I+.32	I-.1	I+.97	I+.81	I+.018
	.05	.05	.05	.05	.05	.24	.32	.32	.32

Dam's Prod. Record: BWR 2-104 WWR 2-112 YWR 1-114
 IMF% 2-128 REA 2-108 RBF RPF

- \$W 29.75
- Frame Score 6
- 4 Muscle 15 Type
- IMF Ratio 140
- REA Ratio 111
- 718 traces to the Great 2536 Cow

5 Daltons Retail Product 758

Bull • 15919701 • TATTOO 758 • CALVED 3/7/2007

#G A R Precision 1680
 G A R Retail Product
 13395329 +G A R Ext 4927

#Tehama Bando 155
 #9J9 G A R 856
 #N Bar Emulation EXT
 G A R Traveler 641

#Bon View New Design 1407
 +VT 1407 New Design Z36
 +14399854 +G A R Plowman G240

#B/R New Design 036
 Bon View Pride 664
 #Plowman 1627 of Millbrae SAR
 G A R Precision 2536

Test Group III

RIBEYE **15**

BACKFAT **.45**

ADJ. IM. FAT **8.00**

BW	BWR	WW	WWR	TEST ADG	ADG R	ADJ YW	YWR	SCROTAL	
75	98	758	108	4.79	116	1451	104	38	
CED	BW	WW	YW	MILK	YH	IM FAT	RIBEYE	BACKFAT	SB
	I+.5	I+.2.2	I+.53	I+.98	I+.30	I+.0	I+.60	I+.56	I+.014
	.05	.37	.35	.34	.31	.24	.05	.05	.05

Dam's Prod. Record: BWR 2-104 WWR 2-112 YWR 1-114
 IMF% 2-128 REA 2-108 RBF RPF

- \$W 29.36
- Frame Score 6.25
- 4 Muscle 14 Type
- 758 traces to the Number 1 \$B cow 2536
- Retaining 1/2 Semen Interest

6 Daltons Retail Product 728

Bull • 15919693 • TATTOO 728 • CALVED 2/13/2007

#G A R Precision 1680
 G A R Retail Product
 13395329 +G A R Ext 4927

#Tehama Bando 155
 #9J9 G A R 856
 #N Bar Emulation EXT
 G A R Traveler 641

#B/R New Design 036
 +JLM Miss Design Rito 4083
 +14896994 +J L M Miss Hi Spade F177

#V D A R New Trend 315
 B/R Blackcap Empress 76
 #G A R Precision 1680
 #S S Miss Hi Spade A114

Test Group III

RIBEYE **15.1**

BACKFAT **.43**

ADJ. IM. FAT **7.24**

BW	BWR	WW	WWR	TEST ADG	ADG R	ADJ YW	YWR	SCROTAL	
75	105	685	98	4.64	113	1421	105	35.08	
CED	BW	WW	YW	MILK	YH	IM FAT	RIBEYE	BACKFAT	SB
	I+.2.9	I+.41	I+.87	I+.25	I+.2	I+.36	I+.37	I-.007	+50.09
	.36	.34	.33	.24	.24	.24	.24	.24	.24

Dam's Prod. Record: BWR 1-105 WWR 1-98 YWR 1-118
 IMF% 1-114 REA 1-103 RBF RPF

- \$W 21.50
- Frame Score 6.5
- 4 Muscle 15 Type
- IMF Ratio 114
- REA Ratio 103
- Retaining 1/2 Semen Interest

The PROGRAM

Total Evaluation Bull Sale

7 Daltons Retail Product 710

Bull • 15919689 • TATTOO 710 • CALVED 1/30/2007

#G A R Precision 1680 { #Tehama Bando 155
 13395329 +G A R Ext 4927 { 9J9 G A R 856
 { #N Bar Emulation EXT
 { G A R Traveler 641

+Daltons New Design 193 { #Bon View New Design 878
 Daltons Lassy 571 { O C C Blackbird 833E
 15224066 Double Bar Barb LASS12 { #B C C Bushwacker 41-93
 { Gibb Barbara Lass 1509

Test Group III

RIBEYE **13.5**
 BACKFAT **.52**
 ADJ. IM. FAT **6.96**

BW	BWR	WW	WWR	TEST ADG	ADG R	ADJ YW	YWR	SCROTAL	
70	100	694	99	4.38	106	1396	103	37.63	
CEB	BW	WW	YW	MILK	YH	IM FAT	RIBEYE	BACKFAT	SB
	I+2.6	I+44	I+84	I+25	I-.1	I+.33	I+.22	I+.002	+43.72
	.36	.34	.33	.24	.24	.24	.24	.24	

Dam's Prod. Record: BWR 1-100 WWR 1-99 YWR 1-118
 IMF% 1-109 REA 1-92 RBF RPF

- \$W 25.43
- Frame Score 5.5
- 3 Muscle 15 Type
- IMF Ratio 109

10 Daltons Prestige 769

Bull • 15919702 • TATTOO 769 • CALVED 3/28/2007

#G A R Precision 1680 { #Tehama Bando 155
 +SydGen Prestige 1316 { 9J9 G A R 856
 +14106302 +S A F Royal Lass 1002 { #V D A R New Trend 315
 { +S A F Royal Lass 6089

Whitestone Precision H141 { #G A R Precision 1680
 VT H141 Precision A61 { +Rita 3X11 of Rita OFB4 Ext
 14689272 +G A R New Design M120 { #B/R New Design 036
 { +G A R Ext 944

Test Group III

RIBEYE **13.5**
 BACKFAT **.52**
 ADJ. IM. FAT **5.75**

BW	BWR	WW	WWR	TEST ADG	ADG R	ADJ YW	YWR	SCROTAL		
80	106	727	104	4.09	99			35.5		
CEB	BW	WW	YW	MILK	YH	IM FAT	RIBEYE	BACKFAT	SB	
	I+5	I+3.8	I+49	I+87	I+25	I+.4	I+.19	I+.60	I+.006	+44.02
	.05	.36	.33	.05	.18	.05	.05	.05	.05	

Dam's Prod. Record: BWR 2-101 WWR 2-101 YWR 1-102
 IMF% 2-105 REA 2-102 RBF RPF

- \$W 25.21
- Frame Score 6.5
- 4 Muscle 15 Type

8 Daltons Titan 75

Bull • 15919687 • TATTOO 75 • CALVED 1/25/2007

#G A R Precision 1680 { #Tehama Bando 155
 13395329 +G A R Ext 4927 { 9J9 G A R 856
 { #N Bar Emulation EXT
 { G A R Traveler 641

+G A R Integrity { #Bon View New Design 1407
 +Whitestone Blackcap U063 { G A R Precision 1019
 +14936401 +G A R Ext 2114 { #N Bar Emulation EXT
 { #G A R Scotch Cap 867

Test Group III

RIBEYE **13.6**
 BACKFAT **.39**
 ADJ. IM. FAT **5.85**

BW	BWR	WW	WWR	TEST ADG	ADG R	ADJ YW	YWR	SCROTAL	
60	ET	629	ET	4.23	103	1299	100	34.45	
CEB	BW	WW	YW	MILK	YH	IM FAT	RIBEYE	BACKFAT	SB
	I+3.3	I+45	I+84	I+28	I+.1	I+.18	I+.21	I-.008	+41.60
	.05	.05	.05	.05	.24	.24	.24	.24	

Dam's Prod. Record: BWR WWR YWR
 IMF% REA RBF RPF

- \$W 25.17
- Frame Score 6.5
- 4 Muscle 14 Type

11 Daltons Integrity 719

Bull • 15919692 • TATTOO 719 • CALVED 2/6/2007

#Bon View New Design 1407 { #B/R New Design 036
 +G A R Integrity { Bon View Pride 664
 +14222612 G A R Precision 1019 { #G A R Precision 1680
 { #+G A R Ext 755

Hyline Right Time 338 { #+Leachman Right Time
 +Daltons Elisa 553 of DG { Hyline Pride 265
 +15216537 T P Elissa of Elba 6181 { #Sitz Traveler 8180
 { Daltons Elba 6181

Test Group III

RIBEYE **15**
 BACKFAT **.54**
 ADJ. IM. FAT **8.29**

BW	BWR	WW	WWR	TEST ADG	ADG R	ADJ YW	YWR	SCROTAL	
70	100	659	94	4.38	106	1377	101	33.36	
CEB	BW	WW	YW	MILK	YH	IM FAT	RIBEYE	BACKFAT	SB
	I+2.0	I+38	I+80	I+26	I-.1	I+.48	I+.33	I+.0	+46.57
	.36	.34	.33	.23	.24	.33	.33	.33	

Dam's Prod. Record: BWR 1-100 WWR 1-94 YWR 1-115
 IMF% 1-130 REA 1-103 RBF RPF

- \$W 23.62
- Frame Score 6.2
- 4 Muscle 15 Type
- IMF Ratio 130
- REA Ratio 103

9 MPA Retail Product 708

Bull • 15838116 • TATTOO 708 • CALVED 2/4/2007

#G A R Precision 1680 { #Tehama Bando 155
 13395329 +G A R Ext 4927 { 9J9 G A R 856
 { #N Bar Emulation EXT
 { G A R Traveler 641

Mpa Super Raymond 001 { +Forever Raymond
 MPA Rita 1418 20B 219 { +Daltons Pride 683
 14182639 +Daltons Rita 8168 of 35 1418 { #Ideal 1418 of 8103 4286
 { Daltons Rita 35 of 9J46 6807

Test Group III

RIBEYE **13.6**
 BACKFAT **.54**
 ADJ. IM. FAT **6.63**

BW	BWR	WW	WWR	TEST ADG	ADG R	ADJ YW	YWR	SCROTAL		
74	99	748	105	2.71	66	1199	95	33.80		
CEB	BW	WW	YW	MILK	YH	IM FAT	RIBEYE	BACKFAT	SB	
	+6	+2.5	+45	I+81	+23	I+.2	I+.28	I+.44	I+.001	+42.65
	.27	.36	.30	.35	.25	.27	.27	.27	.27	

Dam's Prod. Record: BWR 3-103 WWR 3-105 YWR 3-102
 IMF% 2-98 REA 2-106 RBF RPF

- \$W 26.44
- Frame Score 6
- 4 Muscle 15 Type
- IMF Ratio 104
- REA Ratio 107

12 Daltons Future D 754

Bull • 15919699 • TATTOO 754 • CALVED 3/1/2007

#C A Future Direction 5321 { #G A R Precision 1680
 +Daltons Future D 330 of M F { C A Miss Power Fix 308
 +14547542 +M F OSC3 Queen B 8EX5 { #N Bar Emulation EXT
 { +M F Queen B OSC3 of 5H11SC

#Bon View New Design 878 { #B/R New Design 036
 Sweetwater Princess P86 { Bon View Gammer 85
 14924210 Sweetwater Princess 65M { #Rito 616 of 4B20 6807
 { Sweetwater Princess 04

Test Group III

RIBEYE **13.5**
 BACKFAT **.50**
 ADJ. IM. FAT **5.65**

BW	BWR	WW	WWR	TEST ADG	ADG R	ADJ YW	YWR	SCROTAL	
75	105	671	96	4.43	107	1373	98	35	
CEB	BW	WW	YW	MILK	YH	IM FAT	RIBEYE	BACKFAT	SB
	I+1.6	I+37	I+73	I+21	I+.1	I+.31	I+.62	I+.003	+41.15
	.19	.16	.15	.06	.05	.05	.05	.05	

Dam's Prod. Record: BWR 1-105 WWR 1-96 YWR 1-115
 IMF% REA RBF RPF

- Frame Score 6.5
- 4 Muscle 15 Type

The PROGRAM

Total Evaluation Bull Sale

13 Daltons Solution 745

Bull • 15858625 • TATTOO 745 • CALVED 2/9/2007

#S S Traveler 6807 T510 {#D H D Traveler 6807
 #S S Miss Hi Spade A114
 #B/R New Design 036
 G A R Precision 2536

#Sitz Alliance 6595 {#Sitz Traveler 8180
 #Sitz Barbaramere Jet 2698
 +L L F G A No Fear 901
 LLF Exc Blackbird 912

Test Group III

RIBEYE **14.3**
 BACKFAT **.40**
 ADJ. IM. FAT **6.49**

BW	BWR	WW	WWR	TEST ADG	ADG R	ADJ YW	YWR	SCROTAL	
80	110	680	93	4.93	120	1312	101	32.95	
CE	BW	WW	YW	MILK	YH	IM FAT	RIBEYE	BACKFAT	SB
+6	+1.9	+44	I+91	+23	I+0	I+.45	I+.21	I+.014	+46.64
.27	.31	.26	.33	.15	.22	.30	.31	.31	

Dam's Prod. Record: BWR 1-110 WWR 1-93 YWR 1-112
 IMF% 1-96 REA 1-97 RBF RPF

- \$W 24.29
- Frame Score 6
- 3 Muscle 14 Type

16 Daltons Rito Prime 7520

Bull • 15770583 • TATTOO 7520 • CALVED 2/7/2007

#Rito 616 of 4B20 6807 {#D H D Traveler 6807
 +Rita 4B20 of 0FB1 Bando
 #N Bar Prime Time D806
 +D C C Ideal 185 of 019 7220

#C A Future Direction 5321 {#G A R Precision 1680
 C A Miss Power Fix 308
 +G A R Exclamation 3884
 Gale 041 of Mc Cumber

Test Group III

RIBEYE **15.1**
 BACKFAT **.45**
 ADJ. IM. FAT **7.00**

BW	BWR	WW	WWR	TEST ADG	ADG R	ADJ YW	YWR	SCROTAL	
74	102	780	106	3.11	75	1292	99	38.89	
CE	BW	WW	YW	MILK	YH	IM FAT	RIBEYE	BACKFAT	SB
+3	+1.9	+49	I+84	+26	I+.3	I+.40	I+.55	I+.022	+46.52
.26	.31	.26	.31	.18	.16	.27	.27	.27	

Dam's Prod. Record: BWR 1-102 WWR 1-106 YWR 1-110
 IMF% 1-104 REA 1-103 RBF RPF

- \$W 30.41
- Frame Score 7.0
- 3 Muscle 14 Type
- IMF Ratio 104
- REA Ratio 103

14 Daltons Coalition 745

Bull • 15919698 • TATTOO 7450 • CALVED 2/21/2007

#Sitz Alliance 6595 {#Sitz Traveler 8180
 #Sitz Barbaramere Jet 2698
 #Tehama Bando 155
 Pleasant Pride of Conanga

+Rito 2V1 of 2536 1407 {#Bon View New Design 1407
 G A R Precision 2536
 #G A R Precision 1680
 +G D A R Forever Lady 3078

Test Group III

RIBEYE **14.8**
 BACKFAT **.50**
 ADJ. IM. FAT **5.83**

BW	BWR	WW	WWR	TEST ADG	ADG R	ADJ YW	YWR	SCROTAL	
75	106	666	95	4.09	99	1322	97	36.84	
CE	BW	WW	YW	MILK	YH	IM FAT	RIBEYE	BACKFAT	SB
	I+3.7	I+45	I+88	I+28	I+.4	I+.33	I+.30	I+.008	+43.73
	.36	.34	.33	.22	.22	.30	.31	.31	

Dam's Prod. Record: BWR 1-106 WWR 1-95 YWR 1-110
 IMF% 1-92 REA 1-101 RBF RPF

- \$W 22.92
- Frame Score 6.9
- 3 Muscle 14 Type
- REA Ratio 101

17 Daltons Rito Prime 715

Bull • 15919690 • TATTOO 715 • CALVED 2/2/2007

#Rito 616 of 4B20 6807 {#D H D Traveler 6807
 +Rita 4B20 of 0FB1 Bando
 #N Bar Prime Time D806
 +D C C Ideal 185 of 019 7220

BR Midland {#Twin Valley Precision E161
 BR Royal Lass 7036-19
 #R R Traveler 5204
 Bon View Gammer 233

Test Group III

RIBEYE **14.1**
 BACKFAT **.52**
 ADJ. IM. FAT **6.54**

BW	BWR	WW	WWR	TEST ADG	ADG R	ADJ YW	YWR	SCROTAL	
70	98	685	98	3.55	86	1287	95	34.23	
CE	BW	WW	YW	MILK	YH	IM FAT	RIBEYE	BACKFAT	SB
	I+1.8	I+46	I+82	I+21	I-.1	I+.17	I+.28	I+.011	+37.71
	.35	.33	.31	.18	.16	.20	.20	.20	

Dam's Prod. Record: BWR 1-98 WWR 1-98 YWR 1-107
 IMF% 1-103 REA 1-97 RBF RPF

- \$W 28.00
- Frame Score 5.5
- 4 Muscle 14 Type
- IMF Ratio 103

15 Daltons Precision 733

Bull • 15919695 • TATTOO 733 • CALVED 2/16/2007

#Twin Valley Precision E161 {#G A R Precision 1680
 +W C C Blackcap C9
 #Emulation 31
 Primrose N Bar 9962

#C A Future Direction 5321 {#G A R Precision 1680
 C A Miss Power Fix 308
 #G D A R Traveler 71
 Finks 8130 of 678-549

Test Group III

RIBEYE **14.1**
 BACKFAT **.58**
 ADJ. IM. FAT **6.58**

BW	BWR	WW	WWR	TEST ADG	ADG R	ADJ YW	YWR	SCROTAL	
80	106	711	102	3.73	91	1325	98	35.84	
CE	BW	WW	YW	MILK	YH	IM FAT	RIBEYE	BACKFAT	SB
I+3	I+4.0	I+41	I+77	I+22	I+.2	I+.32	I+.34	I+.015	+40.68
.05	.37	.35	.34	.27	.18	.30	.30	.30	

Dam's Prod. Record: BWR 2-111 WWR 2-100 YWR 2-102
 IMF% 2-88 REA 2-95 RBF RPF

- \$W 21.12
- Frame Score 6.3
- 3 Muscle 14 Type
- IMF Ratio 103

18 MPA New Design 709 349M

Bull • 15838117 • TATTOO 709 • CALVED 2/4/2007

#Bon View New Design 1407 {#B/R New Design 036
 Bon View Pride 664
 #Sitz Traveler 8180
 #Sitz Pride 842

+Daltons New Design 193 {#Bon View New Design 878
 O C C Blackbird 833E
 +Forever Raymond

Test Group III

RIBEYE **12.8**
 BACKFAT **.53**
 ADJ. IM. FAT **7.35**

BW	BWR	WW	WWR	TEST ADG	ADG R	ADJ YW	YWR	SCROTAL	
70	97	717	101	4.07	99	1266	101	32.29	
CE	BW	WW	YW	MILK	YH	IM FAT	RIBEYE	BACKFAT	SB
+7	+2.0	+40	I+76	+26	I+.2	I+.36	I+.29	I+.009	+41.11
.26	.35	.29	.32	.20	.20	.29	.30	.30	

Dam's Prod. Record: BWR 1-97 WWR 1-101 YWR 1-105
 IMF% 1-115 REA 1-101 RBF RPF

- \$W 25.97
- Frame Score 6
- 3 Muscle 14 Type
- IMF Ratio 115
- REA Ratio 101

The PROGRAM

Total Evaluation Bull Sale

19 MPA Foreman 710

Bull • 15838118 • TATTOO 710 • CALVED 2/6/2007

#Connealy Forefront
TC Foreman 016
 13699216 #TC Pride 8067

#Connealy Frontline
 { Eileen Heartland Conanga6443
 { #TC Dividend 963
 { TC Pride 6093

Daltons Exclamation
MPA Pride Lass 9A 138
 14182631 Daltons Pride Lass 946

{ +G A R Exclamation 3884
 { Sitz Emma E 2517
 { #+O C C Backstop 888B
 { +Lcar Prides Lass 562

Test Group III

RIBEYE **13.0**

BACKFAT **.38**

ADJ. IM. FAT **4.97**

BW	BWR	WW	WWR	TEST ADG	ADG R	ADJ YW	YWR	SCROTAL	
70	93	793	111	4.13	100	1428	114	36.86	
CED	BW	WW	YW	MILK	YH	IM FAT	RIBEYE	BACKFAT	SB
+8	+1.0	+47	1+92	+14	1+.7	1-.12	1+.20	1-.018	+31.09
.27	.36	.30	.34	.24	.24	.27	.27	.27	

Dam's Prod. Record: BWR 3-93 WWR 3-106 YWR 3-109
 IMF% 3-93 REA 3-92 RBF RPF

- \$W 23.82
- Frame Score 7.0
- 3 Muscle 14 Type
- REA Ratio 102

22 LLF Solution 672

Bull • 15654295 • TATTOO 672 • CALVED 9/15/2006

#S S Traveler 6807 T510
G A R Solution
 14222615 +G A R New Design 50

{ #D H D Traveler 6807
 { #S S Miss Hi Spade A114
 { #B/R New Design 036
 { G A R Precision 2536

+LLF Ga Chisel 791
LLF 583 Chisel 3312
 14811306 L L F 092 Pride 9M9 583

{ #R R 9440 Scotch Cap 1483
 { M B Joanie Ext 3605
 { #+Rito 9M9 of 2036 Scotch Cap
 { J T Pride 92

Test Group I

RIBEYE **13.6**

BACKFAT **.47**

ADJ. IM. FAT **4.22**

BW	BWR	WW	WWR	TEST ADG	ADG R	ADJ YW	YWR	SCROTAL	
77	98	663	100	3.48	90	1177	97	30.88	
CED	BW	WW	YW	MILK	YH	IM FAT	RIBEYE	BACKFAT	SB
+10	+4	+42	+78	+24	+2	+45	+38	+0.008	+45.48
.27	.34	.26	.23	.17	.33	.27	.30	.30	

Dam's Prod. Record: BWR 2-98 WWR 2-104 YWR 2-100
 IMF% 2-99 REA 2-107 RBF 2-88 RPF 2-97

- Frame Score 6.0

20 MPA Midland 716 108

Bull • 15861473 • TATTOO 716 • CALVED 2/21/2007

BR Midland
+Eastwood Daltons Midland 392
 +14740917 +G A R Precision H118

{ #Twin Valley Precision E161
 { BR Royal Lass 7036-19
 { #G A R Precision 1680
 { +G A R Ext 2114

Mpa Super Raymond 001
MPA Lucys Monet 021 208
 14182634 Mpa Lucys Monet 021

{ +Forever Raymond
 { +Daltons Pride 683
 { #+V D A R Lucys Boy
 { M P A Monet 815 of 598

Test Group III

RIBEYE **13.3**

BACKFAT **.55**

ADJ. IM. FAT **7.19**

BW	BWR	WW	WWR	TEST ADG	ADG R	ADJ YW	YWR	SCROTAL	
70	93	732	103	3.98	97	1303	104	33.34	
CED	BW	WW	YW	MILK	YH	IM FAT	RIBEYE	BACKFAT	SB
+8	+1.6	+40	1+77	+17	1+.1	1+.51	1+.36	1+.022	+44.76
.22	.36	.29	.25	.09	.10	.18	.19	.19	

Dam's Prod. Record: BWR 4-100 WWR 4-99 YWR 4-98
 IMF% 4-106 REA 4-100 RBF RPF

- \$W 23.88
- Frame Score 5.75
- 3 Muscle 14 Type
- IMF Ratio 112
- REA Ratio 105

23 LLF 583 Retail Product 673

Bull • 15654368 • TATTOO 673 • CALVED 9/16/2006

#G A R Precision 1680
G A R Retail Product
 13395329 +G A R Ext 4927

{ #Tehama Bando 155
 { 9J9 G A R 856
 { #N Bar Emulation EXT
 { G A R Traveler 641

#+Rito 9M9 of 2036 Scotch Cap
L L F 092 Pride 9M9 583
 12626467 J T Pride 92

{ #Scotch Cap
 { #Leachman Blackbird 2036
 { #Tehama Bando 155
 { #Harmony Pride 2313

Test Group I

RIBEYE **15.5**

BACKFAT **.52**

ADJ. IM. FAT **4.02**

BW	BWR	WW	WWR	TEST ADG	ADG R	ADJ YW	YWR	SCROTAL	
81	93	711	103	3.70	95	1215	97	34.81	
CED	BW	WW	YW	MILK	YH	IM FAT	RIBEYE	BACKFAT	SB
1+4	+2.3	+39	+70	+26	-.1	+37	+55	+0.002	+41.33
.05	.36	.31	.29	.28	.33	.31	.33	.33	

Dam's Prod. Record: BWR 7-101 WWR 7-104 YWR 8-102
 IMF% 16-98 REA 16-104 RBF 16-104 RPF 16-105

- Frame Score 5.5

21 LLF 017 Rito 112 668

Bull • 15654377 • TATTOO 668 • CALVED 9/14/2006

#Rito 616 of 4B20 6807
+Rito 112 of 2536 Rito 616
 +13793826 G A R Precision 2536

{ #D H D Traveler 6807
 { +Rita 4B20 of OFB1 Bando
 { #G A R Precision 1680
 { +G A R Ext 2104

#B/R New Design 036
#+L L F Blackcap 036 017
 #+13669777 L B Blackcap Ext 345

{ #V D A R New Trend 315
 { B/R Blackcap Empress 76
 { #N Bar Emulation EXT
 { #L B 8E8 Blackcap 148

Test Group I

RIBEYE **13.7**

BACKFAT **.34**

ADJ. IM. FAT **4.72**

BW	BWR	WW	WWR	TEST ADG	ADG R	ADJ YW	YWR	SCROTAL	
98	ET	679	ET	4.51	116	1309	100	33.83	
CED	BW	WW	YW	MILK	YH	IM FAT	RIBEYE	BACKFAT	SB
1-1	1+4.6	1+61	1+107	1+27	1+.5	+45	+31	-0.015	+56.79
.05	.05	.05	.05	.05	.30	.30	.31	.32	

Dam's Prod. Record: BWR 5-116 WWR 5-107 YWR 4-108
 IMF% 11-109 REA 11-105 RBF 11-103 RPF 11-97

- Frame Score 6.25

24 LLF Rito 112 678

Bull • 15654297 • TATTOO 678 • CALVED 9/16/2006

#Rito 616 of 4B20 6807
+Rito 112 of 2536 Rito 616
 +13793826 G A R Precision 2536

{ #D H D Traveler 6807
 { +Rita 4B20 of OFB1 Bando
 { #G A R Precision 1680
 { +G A R Ext 2104

#G A R Precision 1680
+Thomas Miss Lucy 2710
 +14120899 #Thomas Miss Lucy 4253

{ #Tehama Bando 155
 { 9J9 G A R 856
 { #Rito 8E8 of 5H11 Traveler
 { Thomas Miss Lucy 0147

Test Group I

RIBEYE **14.0**

BACKFAT **.32**

ADJ. IM. FAT **2.97**

BW	BWR	WW	WWR	TEST ADG	ADG R	ADJ YW	YWR	SCROTAL	
84	105	668	101	3.79	98	1166	97	33.42	
CED	BW	WW	YW	MILK	YH	IM FAT	RIBEYE	BACKFAT	SB
+3	+2.7	+49	+88	+23	+2	+23	+24	-0.015	+44.83
.29	.35	.28	.25	.23	.31	.32	.34	.35	

Dam's Prod. Record: BWR 3-107 WWR 3-102 YWR 3-102
 IMF% 3-79 REA 3-98 RBF 3-99 RPF 3-95

- Frame Score 6.0

The PROGRAM

Total Evaluation Bull Sale

25 LLF New Design 691

Bull • 15771149 • TATTOO 691 • CALVED 9/28/2006

#B/R New Design 036
#13062750 Bon View Gammer 85

#V D A R New Trend 315
B/R Blackcap Empress 76
#Bon View Bando 598
Bon View Gammer 233

#G A R Expectation 4915
HHF Expect Birdie 115 381
14418742 HHF N Design Birdie 480 115

#N Bar Emulation EXT
G A R Traveler 2421
#B/R New Design 036
HHF PD Lady 1150 480

Test Group I

RIBEYE **13.0**
BACKFAT **.42**
ADJ. IM. FAT **3.14**

BW	BWR	WW	WWR	TEST ADG	ADG R	ADJ YW	YWR	SCROTAL
86	107	622	94	4.63	119	1209	100	30.96

CED	BW	WW	YW	MILK	YH	IM FAT	RIBEYE	BACKFAT	SB
+6	+2.9	+41	+81	+28	+4	+06	+22	+018	+32.59
.29	.38	.31	.28	.26	.31	.31	.34	.34	

Dam's Prod. Record: BWR 3-110 WWR 3-103 YWR 2-103
IMF% 2-97 REA 2-95 RBF 2-117 RPF 2-125

• **Frame Score 6.25**

28 LLF Rito 6I6 443 6118

Bull • 15651869 • TATTOO 6118 • CALVED 11/19/2006

#Rito 6I6 of 4B20 6807
+14820580 L B Blackcap Ext 345

#D H D Traveler 6807
+Rita 4B20 of OFB1 Bando
#N Bar Emulation EXT
#L B 8E8 Blackcap 148

#Bon View New Design 208
LLF 194 Design 208 3109
14820563 LLF 849 Pinnacle 194

#B/R New Design 036
#Bon View Erica 443
+G A R Pinnacle
L L F A I Elia 849

Test Group I

RIBEYE **12.1**
BACKFAT **.43**
ADJ. IM. FAT **3.84**

BW	BWR	WW	WWR	TEST ADG	ADG R	ADJ YW	YWR	SCROTAL
90	111	727	109	3.07	79	1191	98	39.46

CED	BW	WW	YW	MILK	YH	IM FAT	RIBEYE	BACKFAT	SB
+2	+3.8	+51	+88	+26	+2	+24	+06	+009	+39.65
.23	.33	.24	.16	.09	.27	.21	.24	.25	

Dam's Prod. Record: BWR WWR YWR
IMF% REA RBF RPF

• **Frame Score 6.0**

26 LLF S71 Rito 1I2 6106

Bull • 15654381 • TATTOO 6106 • CALVED 10/26/2006

+Rito 1I2 of 2536 Rito 6I6
+13793826 G A R Precision 2536

#D H D Traveler 6807
+Rita 4B20 of OFB1 Bando
#G A R Precision 1680
+G A R Ext 2104

#S S Traveler 6807 T510
G A R T510 Traveler S71
14081541 +G A R New Design 2009

#D H D Traveler 6807
#S S Miss Hi Spade A114
#B/R New Design 036
+G A R Precision 1013

Test Group I

RIBEYE **13.0**
BACKFAT **.54**
ADJ. IM. FAT **3.66**

BW	BWR	WW	WWR	TEST ADG	ADG R	ADJ YW	YWR	SCROTAL
73	ET	670	ET	3.52	91	1164	100	32.17

CED	BW	WW	YW	MILK	YH	IM FAT	RIBEYE	BACKFAT	SB
I+7	I+1.5	I+53	I+98	I+26	I+1	I+.42	I+.09	I+.021	I+47.98
.05	.05	.05	.05	.05	.26	.20	.22	.22	

Dam's Prod. Record: BWR 3-105 WWR 3-103 YWR NA
IMF% 6-101 REA 6-99 RBF 6-102 RPF 6-100

• **Frame Score 6.0**

29 LLF Predestined 685

Bull • 15654302 • TATTOO 685 • CALVED 9/19/2006

G A R Predestined
13395344 #+G A R Ext 4206

#B/R New Design 036
#V D A R New Trend 315
B/R Blackcap Empress 76
#N Bar Emulation EXT
+G A R 6807 Traveler 1432

#Connealy Freightliner
L L F Burgess F R T 056
13910814 L L F 3630 Burgess Ext 634

#Bon View Bando 598
Joana Erica of Conanga
#N Bar Emulation EXT
M B Mac Burgess Trav 3630

Test Group II

RIBEYE **13.3**
BACKFAT **.80**
ADJ. IM. FAT **4.63**

BW	BWR	WW	WWR	TEST ADG	ADG R	ADJ YW	YWR	SCROTAL
78	96	628	95	4.14	111	1172	105	38.14

CED	BW	WW	YW	MILK	YH	IM FAT	RIBEYE	BACKFAT	SB
+9	+1.9	+46	I+92	+25	I+0	I+.56	I+.47	I+.063	I+47.78
.28	.38	.32	.36	.23	.28	.33	.33	.33	

Dam's Prod. Record: BWR 5-94 WWR 5-99 YWR 4-100
IMF% 5-108 REA 5-100 RBF 5-126 RPF 5-94

• **Frame Score 5.5**

27 John B Retail 609

Bull • 15543005 • TATTOO 609 • CALVED 8/30/2006

G A R Retail Product
13395329 +G A R Ext 4927

#Tehama Bando 155
9J9 G A R 856
#N Bar Emulation EXT
G A R Traveler 641

#Rito 6I6 of 4B20 6807
MAF 2603 of 6I6 of CD08
14728538 C M Deal 036

#D H D Traveler 6807
+Rita 4B20 of OFB1 Bando
#B/R New Design 036
W 4 96 of 26 Ext

Test Group I

RIBEYE **13.0**
BACKFAT **.51**
ADJ. IM. FAT **4.81**

BW	BWR	WW	WWR	TEST ADG	ADG R	ADJ YW	YWR	SCROTAL
75	96	635	96	4.39	113	1222	101	34.37

CED	BW	WW	YW	MILK	YH	IM FAT	RIBEYE	BACKFAT	SB
+8	+1.5	+42	+88	+24	-.1	+41	+23	+016	+47.28
.29	.37	.30	.27	.25	.31	.31	.33	.34	

Dam's Prod. Record: BWR 2-90 WWR 2-102 YWR 1-101
IMF% 1-113 REA 1-93 RBF 1-113 RPF 1-119

• **Frame Score 5.5**

30 LLF S71 Rito 1I2 6105

Bull • 15654380 • TATTOO 6105 • CALVED 10/22/2006

+Rito 1I2 of 2536 Rito 6I6
+13793826 G A R Precision 2536

#D H D Traveler 6807
+Rita 4B20 of OFB1 Bando
+G A R Precision 1680
+G A R Ext 2104

#S S Traveler 6807 T510
G A R T510 Traveler S71
14081541 +G A R New Design 2009

#D H D Traveler 6807
#S S Miss Hi Spade A114
#B/R New Design 036
+G A R Precision 1013

Test Group II

RIBEYE **13.2**
BACKFAT **.24**
ADJ. IM. FAT **2.86**

BW	BWR	WW	WWR	TEST ADG	ADG R	ADJ YW	YWR	SCROTAL
69	100	600	100	4.13	111	1094	100	34.7

CED	BW	WW	YW	MILK	YH	IM FAT	RIBEYE	BACKFAT	SB
I+7	I+1.5	I+53	I+98	I+26	I+1	I+.37	I+.08	I+.004	I+48.42
.05	.05	.05	.05	.05	.05	.27	.27	.27	

Dam's Prod. Record: BWR 3-105 WWR 3-103 YWR NA
IMF% 6-101 REA 6-99 RBF 6-102 RPF 6-100

• **Frame Score 6.0**

The PROGRAM

Total Evaluation Bull Sale

31 **LLF S71 Rito II2 6107** **Test Group II**
Bull • 15654382 • TATTOO 6107 • CALVED 10/29/2006

#Rito 616 of 4B20 6807
 +Rito 112 of 2536 Rito 616
 +13793826 G A R Precision 2536

#S S Traveler 6807 T510
 G A R T510 Traveler S71
 14081541 +G A R New Design 2009

{ #D H D Traveler 6807
 { +Rita 4B20 of OFB1 Bando
 { #G A R Precision 1680
 { +G A R Ext 2104

{ #D H D Traveler 6807
 { #S S Miss Hi Spade A114
 { #B/R New Design 036
 { +G A R Precision 1013

RIBEYE **14**
 BACKFAT **.22**
 ADJ. IM. FAT **4.76**
 SCROTAL **34.42**

BW	BWR	WW	WWR	TEST ADG	ADG R	ADJ YW	YWR	SCROTAL	
69	ET	582	ET	3.91	105	1084	100	34.42	
CED	BW	WW	YW	MILK	YH	IM FAT	RIBEYE	BACKFAT	SB
I+7	I+1.5	I+53	I+98	I+26	I+.1	I+.58	I+.16	I+.001	+54.44
.05	.05	.05	.05	.05	.26	.27	.27	.27	

Dam's Prod. Record: BWR 3-105 WWR 3-103 YWR NA
 IMF% 6-101 REA 6-99 RBF 6-102 RPF 6-100

• **Frame Score 6.0**

34 **SSA Zeus BVND of 2-878 663** **Test Group I**
Bull • 15565452 • TATTOO 663 • CALVED 9/11/2006

#Bon View New Design 878
 +Rito 2 878 of 2536 BVND 878
 +14200755 G A R Precision 2536

#B/R New Design 036
 #Bon View Gammer 85
 #G A R Precision 1680
 +G A R Ext 2104

#B/R New Design 036
 #Bon View Erica 443
 #Bon View New Design 208
 L L F SH Miss Traveler 905

RIBEYE **12.7**
 BACKFAT **.35**
 ADJ. IM. FAT **5.09**
 SCROTAL **37.26**

BW	BWR	WW	WWR	TEST ADG	ADG R	ADJ YW	YWR	SCROTAL	
79	102	661	103	3.64	94	1146	102	37.26	
CED	BW	WW	YW	MILK	YH	IM FAT	RIBEYE	BACKFAT	SB
+8	+6	+38	+74	+30	I+.2	+.34	+.38	+.010	+39.99
.28	.34	.28	.26	.20	.20	.29	.31	.31	

Dam's Prod. Record: BWR 2-91 WWR 2-101 YWR 2-102
 IMF% 2-121 REA 2-99 RBF 2-110 RPF 2-122

• **Frame Score 6.5**

32 **LLF S71 Rito II2 6111** **Test Group II**
Bull • 15654383 • TATTOO 6111 • CALVED 11/3/2006

#Rito 616 of 4B20 6807
 +Rito 112 of 2536 Rito 616
 +13793826 G A R Precision 2536

#S S Traveler 6807 T510
 G A R T510 Traveler S71
 14081541 +G A R New Design 2009

{ #D H D Traveler 6807
 { +Rita 4B20 of OFB1 Bando
 { #G A R Precision 1680
 { +G A R Ext 2104

{ #D H D Traveler 6807
 { #S S Miss Hi Spade A114
 { #B/R New Design 036
 { +G A R Precision 1013

RIBEYE **14**
 BACKFAT **.36**
 ADJ. IM. FAT **3.11**
 SCROTAL **30.18**

BW	BWR	WW	WWR	TEST ADG	ADG R	ADJ YW	YWR	SCROTAL	
70	ET	614	ET	4.63	124	1152	100	30.18	
CED	BW	WW	YW	MILK	YH	IM FAT	RIBEYE	BACKFAT	SB
I+7	I+1.5	I+53	I+98	I+26	I+.1	I+.40	I+.16	I+.016	+48.52
.05	.05	.05	.05	.05	.26	.27	.27	.27	

Dam's Prod. Record: BWR 3-105 WWR 3-103 YWR NA
 IMF% 6-101 REA 6-99 RBF 6-102 RPF 6-100

• **Frame Score 5.75**

35 **SSA Sampson Predestined 674** **Test Group I**
Bull • 15565455 • TATTOO 674 • CALVED 9/16/2006

#B/R New Design 036
 G A R Predestined
 13395344 #+G A R Ext 4206

#V D A R New Trend 315
 B/R Blackcap Empress 76
 #N Bar Emulation EXT
 +G A R 6807 Traveler 1432

L L F Gilreath Trendsetter
 L L F Blackcap Ext 345
 #Connealy Frontline
 +G A R Evas R R Traveler 512

RIBEYE **14.8**
 BACKFAT **.56**
 ADJ. IM. FAT **4.40**
 SCROTAL **32.92**

BW	BWR	WW	WWR	TEST ADG	ADG R	ADJ YW	YWR	SCROTAL	
76	98	635	99	3.55	92	1077	96	32.92	
CED	BW	WW	YW	MILK	YH	IM FAT	RIBEYE	BACKFAT	SB
+9	+2.0	+47	+87	+23	I-.2	+.41	+.63	+.027	+47.75
.26	.34	.28	.26	.21	.23	.29	.31	.31	

Dam's Prod. Record: BWR 2-84 WWR 2-99 YWR 2-97
 IMF% 2-102 REA 2-99 RBF 2-105 RPF 2-112

• **Frame Score 5.5**

33 **SSA Attila of SA-6595 684** **Test Group I**
Bull • 15557539 • TATTOO 684 • CALVED 9/18/2006

#Sitz Traveler 8180
 #Sitz Alliance 6595
 #12310707 #Sitz Bararamere Jet 2698

+L L F G A No Fear 901
 LLF 8100 No Fear 399
 14811278 L L F Miss Trend 8100

{ #G D A R Traveler 71
 { Sitz Everelda Entense 1137
 { 3 Bar Spike 1766
 { #Sitz Bararamere Jet 155

{ #V F Venture Forward
 { L B Blackcap Ext 345
 { L L F Gilreath Trendsetter
 { L L F 759 Miss 9FB3 573

RIBEYE **14.5**
 BACKFAT **.48**
 ADJ. IM. FAT **3.14**
 SCROTAL **37.48**

BW	BWR	WW	WWR	TEST ADG	ADG R	ADJ YW	YWR	SCROTAL	
79	102	733	114	4.50	116	1237	110	37.48	
CED	BW	WW	YW	MILK	YH	IM FAT	RIBEYE	BACKFAT	SB
+5	+2.6	+55	+98	+27	I+.5	+0	+.37	+.007	+36.45
.27	.34	.28	.26	.25	.27	.29	.31	.31	

Dam's Prod. Record: BWR 2-82 WWR 2-103 YWR 2-103
 IMF% 2-89 REA 2-100 RBF 2-105 RPF 2-94

• **Frame Score 6.5**

36 **LLF Predestined of AF 612** **Test Group I**
Bull • 15874307 • TATTOO 612 • CALVED 9/21/2006

#B/R New Design 036
 G A R Predestined
 13395344 #+G A R Ext 4206

#V D A R New Trend 315
 B/R Blackcap Empress 76
 #N Bar Emulation EXT
 +G A R 6807 Traveler 1432

#Gardens Prime Time
 AF Prime Time 739 123
 14189610 +I H 0084 Black Ink 739

#R R Traveler 5204
 #Green Garden Susie 1246 S1
 #Nichols Black Ink Y118
 I H Bando 7388 0084

RIBEYE **14.3**
 BACKFAT **.39**
 ADJ. IM. FAT **3.96**
 SCROTAL **34.55**

BW	BWR	WW	WWR	TEST ADG	ADG R	ADJ YW	YWR	SCROTAL	
95	102	610	91	4.30	111	1178	96	34.55	
CED	BW	WW	YW	MILK	YH	IM FAT	RIBEYE	BACKFAT	SB
+8	+2.1	+38	+81	+22	-.2	+.40	+.52	-.007	+48.50
.27	.38	.31	.28	.21	.31	.32	.34	.35	

Dam's Prod. Record: BWR 3-104 WWR 3-98 YWR 3-100
 IMF% 3-92 REA 3-107 RBF 3-89 RPF 3-83

• **Frame Score 5.25**

The PROGRAM

Total Evaluation Bull Sale

37 LLF Predestined of AF 620

Bull • 15874311 • TATTOO 620 • CALVED 9/24/2006

#B/R New Design 036	{ #V D A R New Trend 315	RIBEYE
G A R Predestined	{ B/R Blackcap Empress 76	13.8
13395344	{ #N Bar Emulation EXT	BACKFAT
	{ +G A R 6807 Traveler 1432	.46
		ADJ. IM. FAT
		4.58

BW	BWR	WW	WWR	TEST ADG	ADG R	ADJ YW	YWR	SCROTAL
100	108	624	93	3.93	101	1186	97	37.15

CED	BW	WW	YW	MILK	YH	IM FAT	RIBEYE	BACKFAT	SB
+5	+3.2	+40	+80	+22	+1	+4.7	+4.5	+0.30	+44.74
.27	.38	.31	.28	.22	.34	.32	.34	.35	

Dam's Prod. Record: BWR 4-101 WWR 4-97 YWR 4-98
IMF% 4-110 REA 4-98 RBF 4-123 RPF 4-128

• **Frame Score 6.0**

40 LLF Retail Product of AF 637

Bull • 15874319 • TATTOO 637 • CALVED 10/17/2006

#G A R Precision 1680	{ #Tehama Bando 155	RIBEYE
G A R Retail Product	{ 9J9 G A R 856	12.2
13395329	{ #N Bar Emulation EXT	BACKFAT
	{ G A R Traveler 641	.45
		ADJ. IM. FAT
		3.62

BW	BWR	WW	WWR	TEST ADG	ADG R	ADJ YW	YWR	SCROTAL
80	86	676	101	3.50	90	1194	98	37.88

CED	BW	WW	YW	MILK	YH	IM FAT	RIBEYE	BACKFAT	SB
+12	-1.3	+39	+79	+29	+4	+2.4	+0.4	-.001	+36.91
.30	.38	.32	.28	.26	.33	.32	.34	.35	

Dam's Prod. Record: BWR 5-105 WWR 5-111 YWR 4-104
IMF% 4-85 REA 4-104 RBF 4-88 RPF 4-90

• **Frame Score .6.5**

38 LLF Predestined of AF 622

Bull • 15874312 • TATTOO 622 • CALVED 9/24/2006

#B/R New Design 036	{ #V D A R New Trend 315	RIBEYE
G A R Predestined	{ B/R Blackcap Empress 76	13.6
13395344	{ #N Bar Emulation EXT	BACKFAT
	{ +G A R 6807 Traveler 1432	.42
		ADJ. IM. FAT
		3.02

BW	BWR	WW	WWR	TEST ADG	ADG R	ADJ YW	YWR	SCROTAL
95	103	677	101	3.46	89	1178	96	35.18

CED	BW	WW	YW	MILK	YH	IM FAT	RIBEYE	BACKFAT	SB
+5	+2.8	+45	+79	+25	+0	+3.2	+4.5	+0.13	+44.74
.28	.38	.31	.28	.21	.31	.32	.34	.35	

Dam's Prod. Record: BWR 3-100 WWR 3-102 YWR 3-101
IMF% 3-82 REA 3-100 RBF 3-93 RPF 3-113

• **Frame Score 5.75**

41 LLF Retail Product of AF 640

Bull • 15874321 • TATTOO 640 • CALVED 10/21/2006

#G A R Precision 1680	{ #Tehama Bando 155	RIBEYE
G A R Retail Product	{ 9J9 G A R 856	13.5
13395329	{ #N Bar Emulation EXT	BACKFAT
	{ G A R Traveler 641	.38
		ADJ. IM. FAT
		3.83

BW	BWR	WW	WWR	TEST ADG	ADG R	ADJ YW	YWR	SCROTAL
88	94	580	87	3.48	90	1108	91	34.54

CED	BW	WW	YW	MILK	YH	IM FAT	RIBEYE	BACKFAT	SB
+6	+1.3	+34	+71	+21	-.1	+3.8	+3.8	-.001	+42.46
.30	.37	.30	.28	.25	.31	.31	.34	.34	

Dam's Prod. Record: BWR 2-93 WWR 2-96 YWR 2-100
IMF% 2-101 REA 2-97 RBF 2-96 RPF 2-115

• **Frame Score 5.5**

39 LLF Predestined of AF 627

Bull • 15874315 • TATTOO 627 • CALVED 10/2/2006

#B/R New Design 036	{ #V D A R New Trend 315	RIBEYE
G A R Predestined	{ B/R Blackcap Empress 76	13.6
13395344	{ #N Bar Emulation EXT	BACKFAT
	{ +G A R 6807 Traveler 1432	.65
		ADJ. IM. FAT
		4.38

BW	BWR	WW	WWR	TEST ADG	ADG R	ADJ YW	YWR	SCROTAL
115	124	687	103	4.27	109	1257	103	34.90

CED	BW	WW	YW	MILK	YH	IM FAT	RIBEYE	BACKFAT	SB
-2	+5.7	+48	+88	+24	+0	+4.8	+5.2	+0.46	+46.41
.28	.38	.31	.28	.22	.34	.30	.32	.33	

Dam's Prod. Record: BWR 4-117 WWR 4-102 YWR 4-103
IMF% 4-100 REA 4-106 RBF 4-127 RPF 4-107

• **Frame Score 6.0**

42 LLF Retail Product of AF 644

Bull • 15874322 • TATTOO 644 • CALVED 10/23/2006

#G A R Precision 1680	{ #Tehama Bando 155	RIBEYE
G A R Retail Product	{ 9J9 G A R 856	13.7
13395329	{ #N Bar Emulation EXT	BACKFAT
	{ G A R Traveler 641	.60
		ADJ. IM. FAT
		3.93

BW	BWR	WW	WWR	TEST ADG	ADG R	ADJ YW	YWR	SCROTAL
95	102	576	86	4.06	106	1218	99	32.58

CED	BW	WW	YW	MILK	YH	IM FAT	RIBEYE	BACKFAT	SB
+7	+1.6	+33	+77	+22	+2	+3.3	+3.4	+0.08	+42.26
.29	.38	.31	.29	.26	.34	.32	.34	.35	

Dam's Prod. Record: BWR 4-89 WWR 4-97 YWR 4-98
IMF% 4-92 REA 4-100 RBF 4-88 RPF 4-85

• **Frame Score 6.0**

The Total Evaluation Bull Sale PROGRAM

43 LLF Retail Product of AF 645

Bull • 15874323 • TATTOO 645 • CALVED 10/23/2006

#G A R Precision 1680 { #Tehama Bando 155
 G A R Retail Product { 9J9 G A R 856
 13395329 +G A R Ext 4927 { #N Bar Emulation EXT
 { G A R Traveler 641

#B/R New Design 036 { #Tehama Bando 155
 I H 1109 Bando 144603 { G A R Traveler 527
 13006351 Ih Traveler Envious 144603 { #Q A S Traveler 23-4
 { Ivy Hill Envious 14460

Test Group I

RIBEYE **12.7**
 BACKFAT **.50**
 ADJ. IM. FAT **4.29**

BW	BWR	WW	WWR	TEST ADG	ADG R	ADJ YW	YWR	SCROTAL	
90	97	709	106	3.34	86	1122	92	39.09	
CED	BW	WW	YW	MILK	YH	IM FAT	RIBEYE	BACKFAT	SB
+6	+1.0	+37	+61	+24	+2	+37	+11	+0.11	+31.70
.28	.37	.30	.27	.25	.34	.31	.33	.34	

Dam's Prod. Record: BWR 6-100 WWR 6-100 YWR 5-95
 IMF% 5-103 REA 5-95 RBF 5-109 RPF 5-99

• Frame Score 6.0

45 LLF Retail Product of AF 651

Bull • 15874325 • TATTOO 651 • CALVED 10/25/2006

#G A R Precision 1680 { #Tehama Bando 155
 G A R Retail Product { 9J9 G A R 856
 13395329 +G A R Ext 4927 { #N Bar Emulation EXT
 { G A R Traveler 641

#B/R New Design 036 { #B/R New Design 036
 AF Design 323 113 { B/R Ruby of Tiffany 155
 14189595 I H 1109 Bando 521 { G A R Bando 1109
 { L L F Pine Drive Eneta 521

Test Group I

RIBEYE **16.5**
 BACKFAT **.42**
 ADJ. IM. FAT **3.25**

BW	BWR	WW	WWR	TEST ADG	ADG R	ADJ YW	YWR	SCROTAL	
105	113	714	107	4.20	109	1308	107	41.64	
CED	BW	WW	YW	MILK	YH	IM FAT	RIBEYE	BACKFAT	SB
+3	+2.9	+42	+83	+27	+3	+20	+80	-.005	+45.18
.29	.38	.31	.29	.25	.33	.32	.34	.35	

Dam's Prod. Record: BWR 4-109 WWR 4-111 YWR 4-106
 IMF% 4-89 REA 4-102 RBF 4-94 RPF 4-108

• Frame Score 6.3

44 LLF Retail Product of AF 649

Bull • 15874324 • TATTOO 649 • CALVED 10/25/2006

#G A R Precision 1680 { #Tehama Bando 155
 G A R Retail Product { 9J9 G A R 856
 13395329 +G A R Ext 4927 { #N Bar Emulation EXT
 { G A R Traveler 641

#B/R New Design 036 { #V D A R New Trend 315
 I H 036 9111 { B/R Blackcap Empress 76
 13794979 I H 5204 26B6 { #R R Traveler 5204
 { Gilreath Bando G142

Test Group I

RIBEYE **13.2**
 BACKFAT **.44**
 ADJ. IM. FAT **2.23**

BW	BWR	WW	WWR	TEST ADG	ADG R	ADJ YW	YWR	SCROTAL	
95	102	684	102	4.18	108	1254	102	37.14	
CED	BW	WW	YW	MILK	YH	IM FAT	RIBEYE	BACKFAT	SB
+6	+1.6	+40	+86	+25	+4	+12	+32	+0	+40.72
.30	.38	.31	.28	.26	.34	.30	.32	.33	

Dam's Prod. Record: BWR 5-105 WWR 5-97 YWR 3-102
 IMF% 4-84 REA 4-98 RBF 4-97 RPF 4-97

• Frame Score 6.5

46 Rito 7A9 of 2607 Predestine

Bull • 15687979 • TATTOO 7A9 • CALVED 2/14/2007

#B/R New Design 036 { #V D A R New Trend 315
 G A R Predestined { B/R Blackcap Empress 76
 13395344 #+G A R Ext 4206 { #N Bar Emulation EXT
 { +G A R 6807 Traveler 1432

#G A R Precision 1680 { #Tehama Bando 155
 +Thomas Patricia 2607 { 9J9 G A R 856
 +14120826 Thomas Patricia 0119 { #Scotch Cap
 { #Thomas Patricia 7029

Test Group III

RIBEYE **16.2**
 BACKFAT **.58**
 ADJ. IM. FAT **4.45**

BW	BWR	WW	WWR	TEST ADG	ADG R	ADJ YW	YWR	SCROTAL	
83	106	798	115						
CED	BW	WW	YW	MILK	YH	IM FAT	RIBEYE	BACKFAT	SB
1+6	1+3.7	1+43	1+85	1+25		1+.53	1+.70	1+.018	+58.66
.05	.05	.05	.05	.05		.05	.05	.05	

Dam's Prod. Record: BWR 3-103 WWR 3-108 YWR 2-108
 IMF% 3-92 REA 3-100 RBF 3-109 RPF 3-95

NOTES

The Total Evaluation Bull Sale PROGRAM

SALE ORDER

You, the PerformAngus/Program Bull Sale customers have always appreciated the data provided on our bulls. In fact, when asked, you requested more information, not less. This is why we take so many measurements and have so many calculations performed. You are provided as many tools as possible to make your selections. We feel this information is useful in formulating a sale order.

As you may be aware, we have for the past ten years or more made our sale order somewhat random in an attempt to allow each participant to have equal distribution of bulls throughout the sale offering. At this time, we are establishing sale order through a formula. The formula consists of the following for the following reasons.

Our bulls do complete a feed test. We refer to them as performance tested. Therefore, for sales purposes bulls are credited for their average daily gain ratio. We know that yearling weight is the best measurement for overall growth in pounds and it is one of the most heritable traits. Total growth to a year of age is reflected in yearling weight, not just the test period.

For this reason we assign yearling weight twice the value of average daily gain. Using the average daily gain ratio added to two times the yearling ratio dividing the total by three gives us an index ranking the bulls with twice the value for yearling weight as average daily gain. Many will remember this is one of the initial forms to establish sale order at our Beef Cattle Improvement Association sales.

Also, we realize the importance of EPD values, pedigree and interrelationships. The American Angus Association has provided an excellent tool in their dollar indexes to account for these. Therefore, we incorporate the inclusive \$B value into our index of test and measured growth by adding the appropriate amount from the following \$B table to our index that has been calculated as described above.

\$B value = Addition to 1/3 + 2/3 index
>55.00 = +15
50.00 - 54.99 = +10
45.00 - 49.99 = +5
40.00 - 44.99 = +3
30.00 - 39.99 = 0
<30.00 = -5

Remember, no sale order is without fault. The tools we use here do not account for milking potential of daughters, for example. Pure calving ease is not directly included in the \$B value even though birth to yearling spread does receive attention. Frame score and other things are not a factor here, so you will need to address your needs with your opinions and expertise, as always.

In no way does this ensure the best bull sells first or that the least valuable is last. It does give us a method of take our personal relationships out of the process and determine a sale order well ahead of sale day and print it for you. We thought that may be another tool you can use.

LOT	LOT	LOT	LOT	LOT
2	7	14	30	28
1	11	31	16	34
46	12	44	23	35
5	32	20	37	41
21	45	33	24	9
6	19	36	22	43
10	29	15	17	
13	39	25	26	
3	8	18	38	
4	27	42	40	

"Bulls from Programs with a Program"

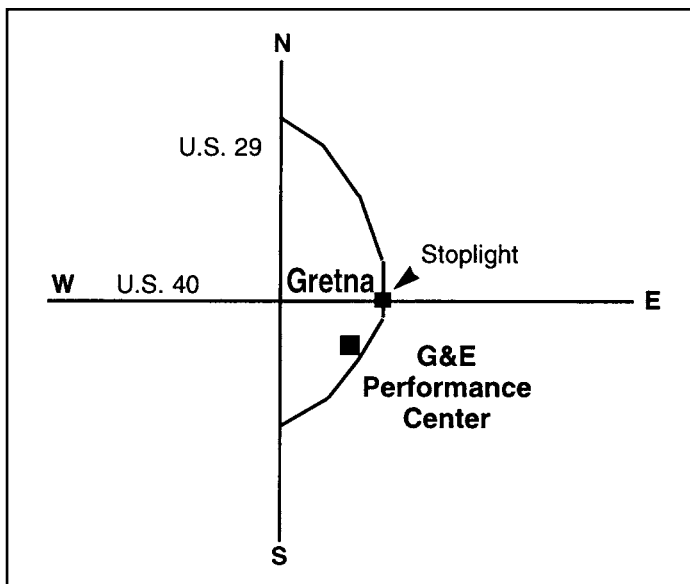
The PROGRAM

Total Evaluation Bull Sale

12:30 p.m. • Saturday

FEBRUARY 23, 2008

G & E Performance Test Center • Gretna, Virginia



Sale Consultants

Cotton & Associates

Mike Gothard • 540-894-1055

&

Jerry Crenshaw • 703-244-4767

SAVE THE DATE

G&E Test Center Premium

Assured Heifer Sale

100 of Virginia's Finest

Commercial Females

Bred & Open Heifers

March 29, 2008 • 12:30 pm

at the G&E Bull Sale Barn

**LOCUST
LEVEL
FARMS**

12065 Chatham Rd.
Vernon Hill, VA 24597

PRST First Class
US Postage
PAID
Boelte-Hall, Inc.
66205

FORWARDING SERVICE REQUESTED